

# Kilby December Parent Advisory

# Agenda

November Superintendent Advisory  
Council on Instruction November 13th

Attendance Matters

6th grade specialty programs

Math information

2026-2027 School Year Boundary  
Information

# November Superintendent Advisory Council On Instruction November 13th

## Vision 2025 ends in December 2025

PWCS Core Commitments (will remain the same for Vision 2030 plan)

- Learning and Achievement for All: every student has a fair shot
- Positive Climate and Culture: all things safety
- Family and Community Engagement: trusted partners in the community
- Organizational Coherence: unified school system

These commitments have a focus of equity for all.

# November Superintendent Advisory Council On Instruction November 13th

## Important Goals

- **95% On-Time Graduation Rate**
- **5% Decrease in Chronic Absenteeism**
- **85% SOL proficiencies across core content areas (reading, math, social science and science)**
- **10% Decrease in English Learners dropout rate**

# November Superintendent Advisory Council On Instruction November 13th

## Commitment Four: Organizational Coherence

- Across the school system, we must have normal practices that include investments in schools to eliminate inequities across different schools
- Average Salary Increases
- Standards of Excellence (SOE)
  - ✦ SOE seeks to implement normal practices across school system that are centrally managed – everyone follows same policies without taking away unique cultures of individual school
- Digital Equity
  - ✦ PWCS took the burden away from schools to fund digital devices, so they did not have to come out of their budget to pay for it
  - ✦ This ensures that every school has the same devices – no device is older than 5 years and PWCS takes care of the refresh
  - ✦ \$93M went into modernizing technology in all schools to not impact budgets

# November Superintendent Advisory Council On Instruction November 13th

## Commitment Three: Family and Community Engagement

- Goal is building trust between families and the community to foster strong relationships, because schools with strong parent and community engagement have students that are achieving better

# November Superintendent Advisory Council On Instruction November 13th

## Commitment Two: Positive Climate and Culture

- Diversity Goal: by 2025 increase diversity by 5% to make sure that students see themselves in the classroom
- Safety & Security
  - ✦ SOC operations
- Teacher Shortage Post-Pandemic
  - ✦ Teachers for Tomorrow

# November Superintendent Advisory Council On Instruction November 13th

*Dr. McDade: "Children deserve high quality education as a fundamental right"*

- Vision 2030
  - Unveiling/soft launch in December 2025
  - Presentation to the School Board in January 2026
  - Available for public comment for 30 days
  - School Board to adopt the strategic plan in February 2026

# Attendance Matters

---

1st quarter over 200 students  
received perfect attendance

---

Month of November- Over 350  
students participated in Perfect  
Attendance November  
P.A.N.cakes

---

Month of December- Students  
who are here every day will  
participate in DONUT be absent in  
December

# 6th Grade Specialty Programs



- Prince William County Public Schools offers four specialty programs for middle school students. These programs include the International Baccalaureate Middle Years Program (IB MYP) (Fred Lynn), Math and Science programs (Rippon), Traditional Schools (Porter), World Language programs (Fred Lynn) and the same gender program (Woodbridge Middle).
- You can apply for up to five programs in your zoned school locations. You will need to rank your choices: first choice, second choice, third choice, fourth choice, and fifth choice.
- Complete the online application by the posted deadline of **February 1, 2026**. Once a student meets the program qualifications, their name will be entered into a lottery. Lottery results will be shared with families by **March 1, 2026**, and families must confirm acceptance or decline participation by **March 5, 2026**.
- Specialty Program express bus stops have already been proposed for the next school year. The bus times are set by transportation as the new school year approaches. You will need to identify your Express Bus stop location as part of the application process.
- The parent/guardian of the student will need to use the email address associated with their ParentVUE account when creating an account on the specialty program application website.

# November Superintendent Advisory Council On Instruction November 13th

## □ **Commitment One: Learning and Achievement for All**

- Represents our promise to academic excellence

### Chronic Absenteeism

- ✦ Goal: reduce chronic absenteeism by 5%

### Dropout Rate

- ✦ 2.2% decrease in the overall dropout rate (6% to 3.8%)
- ✦ 8% decrease in the English Learners dropout rate (24.4% to 16.6%)
- ✦ 4% decrease in the Hispanic dropout rate (12.2% to 8.7%)

### Graduation Rate

- ✦ Goal: 95% on-time graduation rate
- ✦ Current: 94.8% on-time graduation rate
  - The highest that PWC has ever seen
- ✦ Every student group improved in graduation rates
- ✦ Students with disabilities have a 95.2% graduation rate

# What is All in VA Tutoring?



---

ALL in VA Tutoring is a program is funded by the Commonwealth of Virginia and is implemented by individual school divisions.

---

It provides funding for high-intensity academic tutoring for public school students in grades 3–8 to address learning loss from the pandemic.

---

Free support is provided for students in Math and English to help accelerate their learning and meet grade-level standards.

## How were students selected for tutoring?

---

Fourth and fifth grade students selected based on previous SOL scores

---

Third grade students selected based on Momentum Math Assessments and Houghton Mifflin Harcourt fall growth measures

# What does tutoring look like?

---

Monday-Thursday from 3:30-5:00

---

Two days of reading and two  
days of math

---

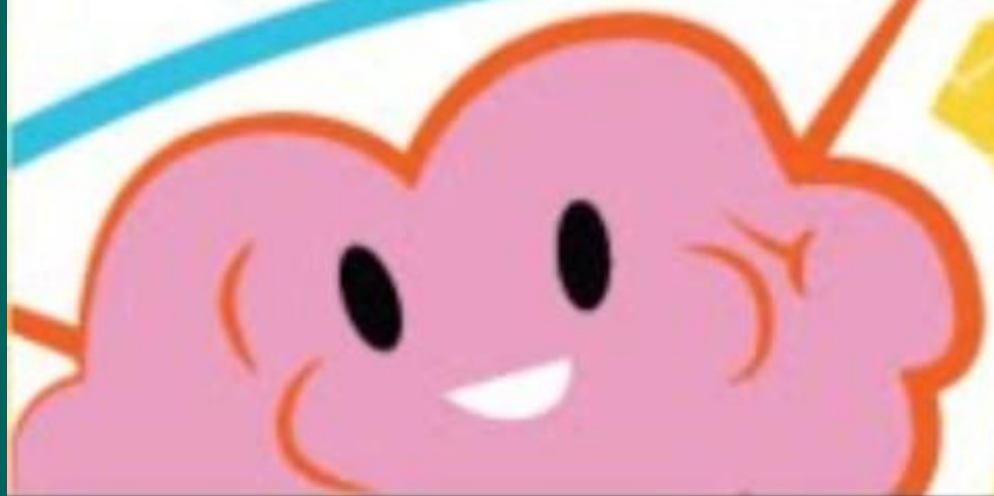
Direct instruction by Kilby Staff to  
meet student needs

---

Practice on digital platform  
“Zearn” assigned by the teacher



**Hi!**



# School Year 2026-2027 Boundary Information

Prince William County Public Schools (PWCS) is beginning the community engagement and planning process associated with the opening of two new elementary schools in eastern Prince William County. These schools are intended to serve elementary students and staff and respond to growing enrollment, particularly in the Cherry Hill area.

- Woodbridge” Elementary School is scheduled to open for the 2026-27 school year.
- “Potomac Shores” Elementary School is scheduled to open for the 2027-28 school year.

# School Year 2026- 2027 Boundary Information

To prepare for these openings, PWCS will conduct a redistricting process to evaluate school boundaries and determine how best to support students, families, and school communities. As part of early planning, PWCS has identified elementary schools that may be impacted by boundary changes. Families at these schools are being notified directly.

These schools include Covington-Harper, Dumfries, Fitzgerald, Henderson, Kilby, Mary Williams, Pattie, Potomac View, River Oaks, Swans Creek, Triangle, and Vaughan Elementary Schools. Please note: This list reflects schools that could be impacted, not definite changes. No decisions will be made until the School Board votes in January.

# School Year 2026- 2027 Boundary Information

The redistricting effort is part of PWCS' commitment to equitable access and long-term planning. It ensures that school boundaries reflect where families live now and where new neighborhoods are growing. With the opening of "Woodbridge" and "Potomac Shores" Elementary Schools, the division will be able to balance enrollment across schools, reduce overcrowding, and make the best use of our facilities – ensuring that every student has access to a high-quality learning environment.

Redistricting scenarios are available on the [PWCS Redistricting Portal](#), where families, staff, and community members will be able to review proposals and share feedback. In the meantime, community members are encouraged to visit the portal to review information about the redistricting process.

# School Year 2026-2027 Boundary Information

PWCS will host two hybrid town halls for community input:

- **November 17** from 7-9 p.m. at Freedom High School (15201 Neabsco Mills Rd., Woodbridge, VA 22191).
  - **December 11** from 7-9 p.m. at Potomac High School (3401 Panther Pride Dr., Dumfries, VA 22026).
- To register to speak, request virtual access, or request any needed accommodations for the December 11 town hall, please complete [this Microsoft form](#).
  - If you are requesting interpretation services, please register by **noon on December 5** to allow sufficient time for arrangements. Registration to speak or request virtual access will close at **noon on December 11**.
  - The form also includes an option for parents to indicate if they are interested in participating in a one-time focus group.
  - No boundary decisions have been made. The School Board is expected to vote in January following public input and review of all scenario options.

# Upcoming Events at Kilby

- Winter Wonderland
- Counting Down for Winter Break Spirit Days

## WINTER WONDERLAND

**WINTER GAMES!**  
5:30pm - 7:00pm  
Gym and front hallways

**CHORUS CONCERT**  
7:00pm - 7:30pm  
Cafeteria Stage

**BOOK FAIR**  
6:00pm - 7:30pm  
Library

**When: Wednesday, December 10th**  
**5:30pm - 7:30pm**

Come with your family to enjoy the fun side of Math, Science, and Reading! Find a book to fall in love with, have fun playing games, and enjoy a musical performance all while supporting your friends!

### DECEMBER 2025

SUNDAY	MONDAY	TUESDAY	WEDNESDAY	THURSDAY	FRIDAY	SATURDAY
	1	2	3	4 <b>Holiday Socks</b> Wear your favorite holiday socks	5 <b>Run Rudolph</b> Wear running clothes	6
7	8 <b>Mad about Plaid</b> Wear Flannel	9 <b>Over the River and Through the Woods-</b> Wear Camouflage	10 <b>Holiday Glow</b> Choose an outfit that sparkles & shines	11 <b>Snuggly Sweater Day</b>	12 <b>Faux Fur Friday</b> Wear furry scarves, hats, boots, vests	13
14	15 <b>PJ Day</b> Wear your favorite holiday PJs	16 <b>Candy Cane Day</b> Wear red and white	17 <b>Tree Topper Day</b> Holiday headpiece, reindeer antlers, elf ears, Santa hat	18 <b>Merry &amp; Bright</b> Holiday lights, garland, tinsel	19 <b>Team Santa or Team Grinch</b> Wear red or green	20
21	22	23	24	25	26	27
28	29	30	31			

# Thank You

Kilby Admin Team and Staff